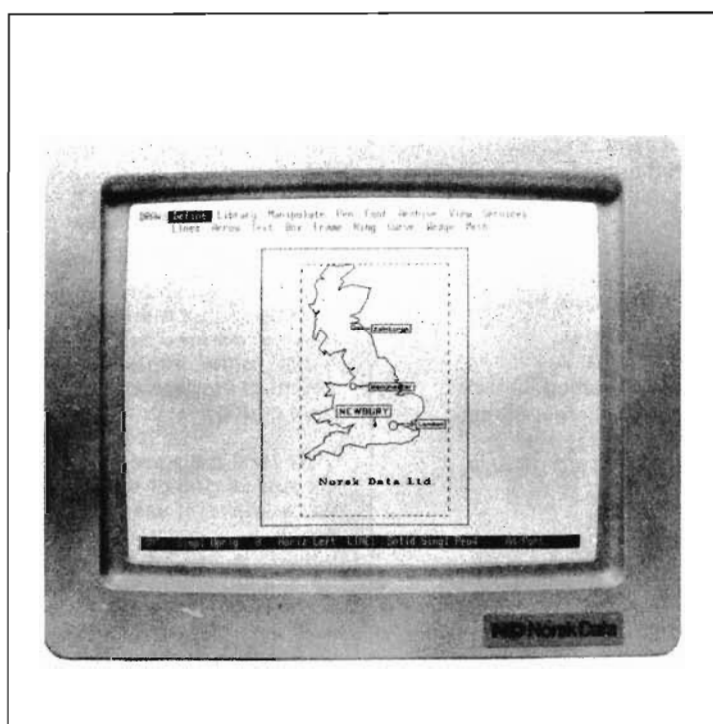


# NOTIS DRAW

ND-500: 211017  
ND-100/48: 211016  
ND-100/32: 211019



# NOTIS-DRAW

## INTRODUCTION

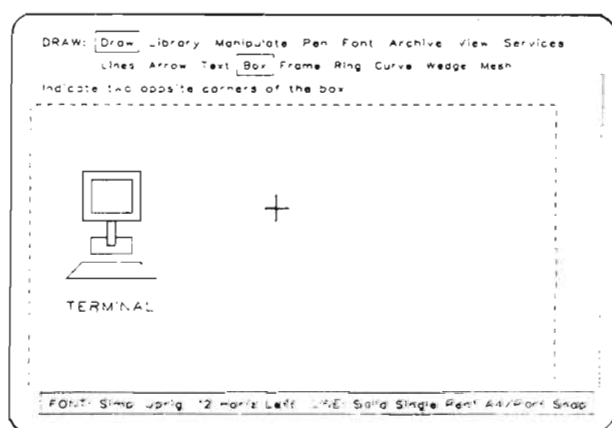
NOTIS-DRAW is a powerful drawing program for the creation of illustrations with text. You can define objects such as lines, boxes, frames and curves, and they are immediately displayed on the screen. Recurrent drawing elements can be fetched from a symbol library.

The finished drawing can be stored, and may be printed on a printer or a six-colour plotter. A drawing can be produced and included directly in a NOTIS Word Processing document.

## FEATURES

- Draw objects such as lines, arrows, boxes and curves
- Choose solid or dashed, single or double lines
- Use a plotter to produce six-colour drawings
- Store recurrent elements in a symbol library
- Scale, rotate or make mirrored copies of objects
- Use function keys to move, copy or delete objects
- Choose typeface, size and direction of text
- Select horizontal, vertical or free text
- Use upright or slanted text
- Set document language as in NOTIS-WP
- Zoom, scroll or look at the full drawing
- Make "standing" or "lying" drawings
- Use grid of dots for accurate positioning
- Turn on "snap" to move cursor to nearest corner
- Display text as boxes in a "fast-mode"
- Print out the drawing or include it in NOTIS-WP

## SCREEN



## PRODUCT DESCRIPTION

NOTIS-DRAW is an interactive drawing program which uses NOTIS command menus and some function keys. It can be used to make schematic illustrations, charts, drawings, models, diagrams and text. The drawings can be stored, printed out directly, or included in NOTIS-WP documents.

You may draw with solid or dashed lines, single or double lines, and, if you use a plotter, one of six colours may be used. You may draw predefined shapes such as boxes, frames and wedges, and combine these. Recurrent drawing elements may also be fetched from a symbol library. This library can store up to 40 named symbols, which can be viewed on the screen and printed out. The user can create an unlimited number of symbol libraries.

NOTIS-DRAW can also be used to produce text. Text is like other objects in that it can be manipulated. There are other options, such as selecting a typeface, choosing between upright or slanted text, and deciding upon the desired size of the text. The size may be dynamic, which means it fills the space between two indicated points. The text may also be positioned in any direction.

A drawing can be edited. An object or a group of objects can be marked for editing. It is possible to make a mirrored copy of the object, scale it up or down, rotate, move, copy or delete it. The corner of an object of connected lines defined by the user, may be repositioned.

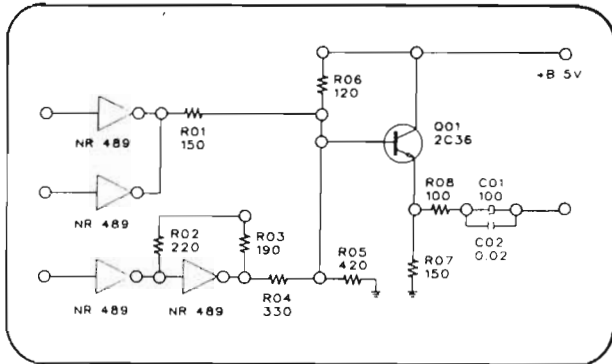
Several tools are available when a drawing is being created. A grid of small dots can be turned on or off, which makes it easier to position and align the objects properly. The distance between these dots is set by the user. A "snap" function can also be used. When this is on, the cross-hair cursor moves to the nearest object corner or grid point when you are asked to position the cursor. In "fast-mode", the text is shown as rectangular boxes temporarily. This makes NOTIS-DRAW redraw the screen faster.

Only a part of the drawing is normally seen on the screen. There are several ways to decide which part should be visible. This part can be enlarged or reduced; it is possible to pan or scroll to move to a different part. The drawing can also be reduced, to make all of it visible at once. Another option is the choice between a portrait or a landscape orientation of the drawing. If the user wants to find out exactly which part of the drawing is visible on the screen, a small figure can be made to appear in the lower left-hand corner of the screen, where the "window" to the drawing is displayed in inverse video.

When the drawing is finished, it can be stored in an archive. It can be printed out directly on a printer or a plotter, or produced as an export file. This file can be included with the directive ^IN-BG; in NOTIS-WP. If this inclusion is requested, sufficient space must be reserved in the NOTIS-WP document for the NOTIS-DRAW drawing.

# NOTIS-DRAW

## EXAMPLES OF USE



### Integration with NOTIS-WP

This example shows you how to use the directive `"IN-BG-filename;` to include your drawing directly in NOTIS-WP.

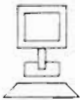
`"IN-BG-example-one;`

The file name "example-one" is the name of the file you made with the command `Archive/Export`. You can make a text column to the left or to the right of the drawing.

To include drawings that go all the way across the sheet, use the directive `"BL=n;` to make room for "n" blank lines.

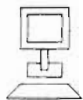
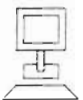
`"IN-BG-example-two;`  
`"BL=10;`

This example shows you how to use the directive `"IN-BG-filename;` to include your drawing directly in NOTIS-WP.

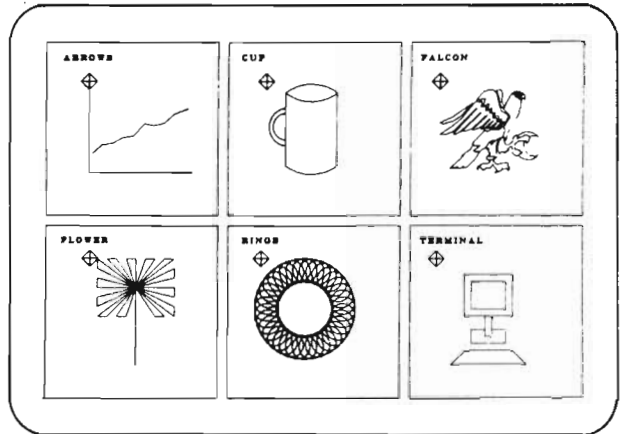


The file name "example-one" is the name of the file you made with the command `Archive/Export`. You can make a text column to the left or to the right of the drawing.

To include drawings that go all the way across the sheet, use the directive `"BL=n;` to make room for "n" blank lines.



## LIBRARY / VIEW



### REQUIREMENTS

- ND-103200 NOTIS terminal with graphic option, version 1.6 or later
- ND 210079/210526 NOTIS-WP, version M or later

### DOCUMENTATION

NOTIS-DRAW User Guide

ND-63.045 EN

NOTIS-DRAW Quick Reference Card

ND-99.039 EN